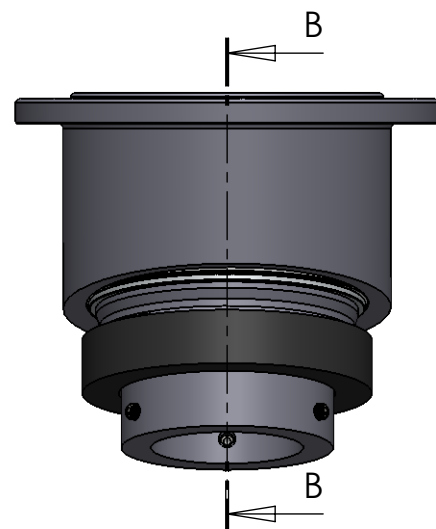


SECTION B-B  
SCALE 1 : 3



ITEM NO.	PART NUMBER	PART NAME	QTY.
1	DIN916-06x10	Socket set screw with cup point M6x10mm	3
2	M01-264	Roller $\varnothing 12.5 \times 44\text{mm}$	18
3	M03-207	Delrin Lockring $\varnothing 88,5 \times \varnothing 71 \times 1,75\text{mm}$	2
4	M05-158	L-ring $\varnothing 60 \varnothing 63.5 \varnothing 85$	2
5	M09-105	Alu lockring $\varnothing 100,5 \times \varnothing 109,5$	1
6	M11-103	Ball 4S060-4SF079	1
7	M36-506	Outer house 4S060Z-20	1
8	M37-101	Inner house 4S060Z	1
9	M39-060	Hanger $\varnothing 60$	1
10	M41-101	Omløber $\varnothing 60\text{mm}$	1
11	M41-510	5mm delrin ball	108
12	M43-118	Cover with M118	1
13	O-ring	$\varnothing 120,5 \times 2.5$	1
14	Platic hub	Plastic innerligner 60 x 1mm plate	1
15	Rubber Ring	$\varnothing 115 \times 3.5$	1

DWG NR / NAME:

**4S060Z-20 / self-aligning rollerbearing**

PROJECT:

Shaft  $\varnothing 60\text{mm}$ . 5-21° alignment. Max working load 4200kg

DATE:

14-09-2010

NAME:

JR

SCALE / PAPER:

1:5 / A4

MATERIAL:

WEIGHT:

g

LOCATION:

REV:

BATCH NR:

REKV.NR / ORDRE NR:

ORDRE DATO:

LEV.DATO:

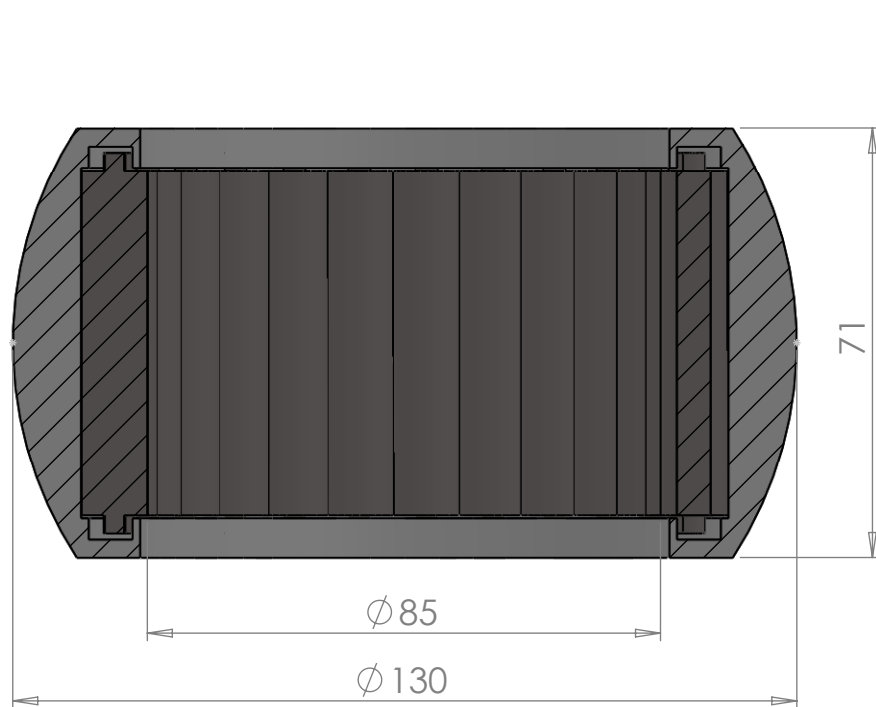
*Jefa Rudder*  
S Y S T E M S

JEFA MARINE A/S  
NIMBUSVEJ 2  
2670 GREVE. DENMARK

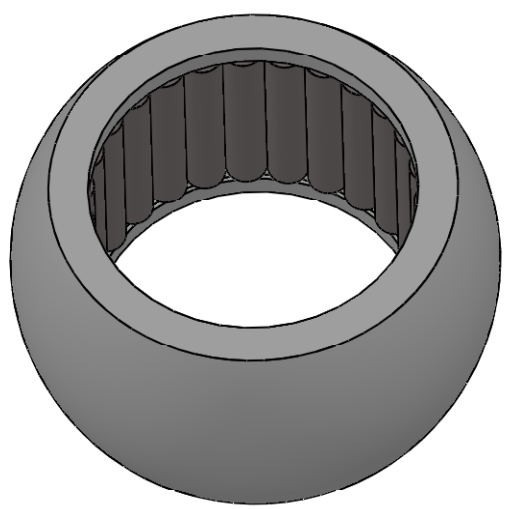
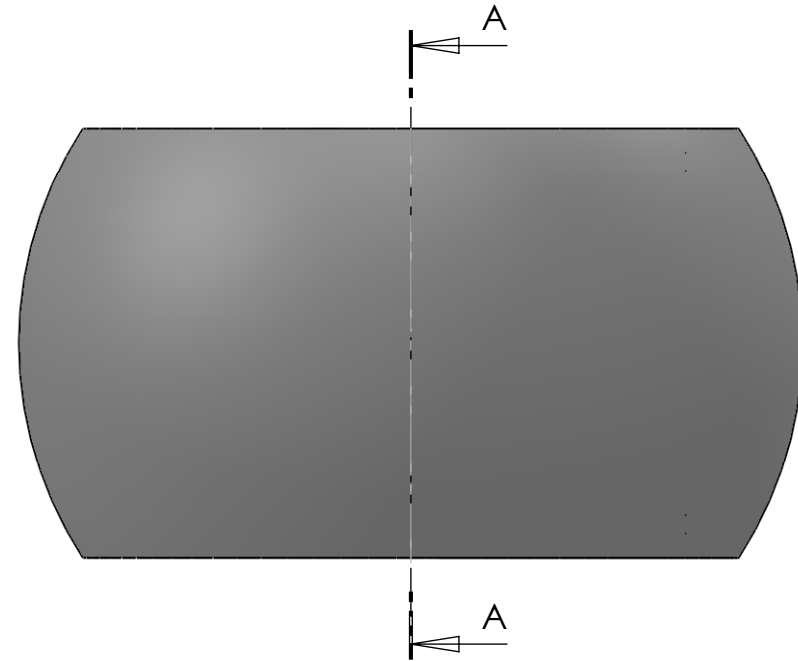
Tlf: +45 4615 5210 & Fax: +45 46155208  
Email: info@jefa.com www.jefa.com


MODIFY DATE:

: /



SECTION A-A  
SCALE 1 : 1.25



DWG NR / NAME: <b>M13-246-85 / Bearing Ball with Rollers</b>				BATCH NR:		 <b>JEFA MARINE A/S</b> NIMBUSVEJ 2 2670 GREVE. DENMARK Tlf: +45 4615 5210 & Fax: +45 46155208 Email: info@jefa.com www.jefa.com
PROJECT: Shaft 85mm, OD 130mm.				REKV.NR / ORDRE NR:		
DATE: 06-04-2011	NAME: JR	SCALE / PAPER: 1:2 / A4	MATERIAL: PETP	LOCATION:	ORDRE DATO:	
MODIFY DATE: : /			WEIGHT: g	REV:	LEV.DATO:	